

# Sampling the safe way

*in the pharmaceutical, chemical,  
food and cosmetic industries for  
liquids, solids and pastes*



Index page 6

Sampling Resources  
pages 2 - 5



**Dynalab**  
Corp

# Viscosity of Liquids

## The right pump for each liquid

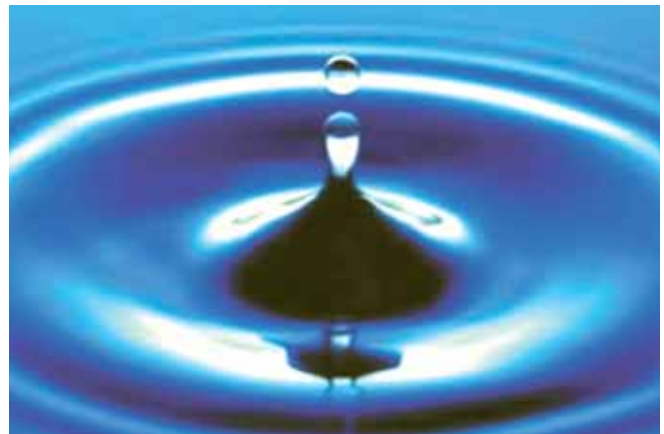
Pumps are used in widely different fields of application. Bürkle offers a large number of different versions. However, when choosing a suitable pump several criteria must be considered. The most important are the viscosity, structure and density of the liquid. How the liquid behaves under the influence of external influences, e.g. variations in temperature and pressure, is also important.

## Viscosity – what actually is viscosity?

The viscosity characterizes the flow behavior of a liquid. High-viscosity liquids are thick, low-viscosity liquids thin. This viscosity results from intermolecular forces; these are also known as the internal friction. This internal friction decreases as the temperature increases and increases as the temperature decreases. The dynamic viscosity is given in Pascals, for low-viscosity liquids in mPas. It is defined as the force in newtons that is necessary to displace a liquid layer of 1 m<sup>2</sup> and 1 m height along a boundary parallel to a second layer at a speed of 1 m per second.

## Viscosity using motor oil as an example

Everyone has heard of the viscosity terms for motor oil. This classification is based on the flow behavior of the motor oil as a function of the temperature. In Winter low-viscosity oils are required. In Summer the oil becomes hotter, but it must still remain sufficiently thick. For example: SAE 5W-40. The first number defines the viscosity at 0 °F (-18 °C), the second for a temperature of 210 °F (99 °C). An oil with the classification 5W (W=Winter) is therefore thinner than a 15W motor oil under cold conditions.



## Typical viscosity values in mPas at 20 °C

Kerosene	0.65	Blood (37 °C)	4 – 25	Olive oil	~ 100
Water	1.0	Coffee cream	~ 10	Hydraulic oil	~ 120
Mercury	1.5	Glycol	40	Yogurt	~ 150
Grape juice	2 – 5	Condensed milk	80	Motor oil 15W40	390

## Take samples the right way

Correct sampling is very important in the context of quality assurance. It is essential if you want to have reliable and accurate data about the quality, properties or composition of a specific material.



You can carry out very precise material analysis using the most modern techniques. However, if a mistake is made in sampling then even these modern techniques are useless because the initial sampling error is carried through all the steps of the analysis and incorrect results will be obtained. This means that a correct statement about the properties of a substance can only be made if the samples are taken and handled with the same care and accuracy as is used in the subsequent analysis. It all comes down to the fact that the properties and composition of the sample itself must correspond exactly to those of the material from which it has been taken.

## Take samples, but how?

A few basic steps must be observed when taking samples. It is recommended that you operate according to an internal company procedure, which should be a fixed component of the quality standards of every company. All relevant sampling steps should be written down and carried out accordingly.

### Sampling site

The site where sampling is carried out must be as clean as possible. If this is impossible due to external factors then, at the very least, care should be taken that clean equipment and auxiliary devices are used. During the sampling process care must be taken that no external factors alter the sample. Even small impurities could falsify results. Detergents that are used for cleaning the sampler and sample packaging can also alter results.



## Take samples, but who?

### Skilled workers

Only skilled workers with special training should take the samples. Sampling has to be carried out exactly in accordance with given guidelines. Skilled workers are able to recognize altered on-site conditions and react quickly to minimize the risk of sample contamination. A skilled worker recognizes malfunctions and changed conditions more quickly and analyzes them accordingly.



# Take samples – but do it right!

Take samples, but using what?

## Sampling equipment

The selection of the correct equipment is subject to many criteria. It depends on the material properties as well as the type of sampling, the containers in which the material is located, and the frequency of sampling. In addition to individual requirements, all equipment should fulfill the basic principles explained below.

## Material

The equipment should be made of inert materials from which nothing can escape to contaminate the sample. Of course, this depends on the corrosiveness of the medium to be sampled. As a rule, equipment made of stainless steel and high quality synthetic or plastic material – especially fluoropolymers – is well suited.

## Cleaning

It should be easy to clean the equipment quickly and – under certain conditions – to sterilize it. Depending on your needs, sterile-packed disposable samplers could be appropriate; these can be disposed of after use.

## Processing

Equipment that is reused should not have any grooves or crevices. Residual material collects in such crevices and cannot be easily removed; cross contamination can be a concern.

## Surfaces

Equipment with especially smooth surfaces has proved to be especially well suited, for example, electropolished stainless steel or fluoropolymers. Such materials minimize deposits and greatly simplify cleaning. When selecting sampling equipment, you should take care to check that it is properly finished both inside and outside.

## Sampling techniques –

### Physical and analytical sampling

A distinction is made between physical and analytical sampling. In physical sampling, the bulk density, material distribution, material properties and – when required, coloring or contamination are determined. It is especially important in this case that the sampler does not damage or destroy the material while



withdrawing it. Also, keep in mind that a sample taken on site still has to be transported. You must also take care during transport and packing that the sample reaches the laboratory non-contaminated. In the analytical method, special attention must be paid to purity in addition to the aspects listed above. On the other hand, the material properties can be disregarded sometimes, because the sample will be specially processed. In this case equipment can be used which changes the physical properties of the material.

**SAVE 10%** All orders over \$250!

## Sampling techniques

### Multilayer sample

A sample is taken through all material layers to provide a representative cross-section.

### Targeted sample

A targeted sample is taken from a pre-determined point. This is done to determine the material state precisely at this point or several targeted samples are taken over a larger area or in a large volume container. All target-point samples averaged together provide a representative cross-section of the material content.

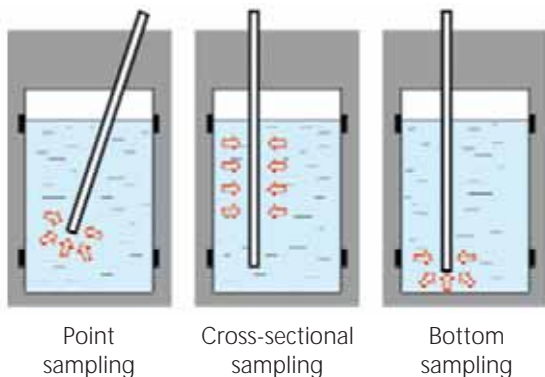
### Completion of the sampling procedure

After the sample has been withdrawn, the sample must be packed for transport. Clean sampling containers connected directly to the sampling equipment – without intermediaries – are ideal. The sample has no contact with the outside environment and is packed for transport at the same time. The same conditions relating to the sampling equipment apply to packaging, storage, and transport. Here too you should pay attention to the cleanliness of the packaging material and the risk of contamination from escaping substances. The containers are then labeled and taken to a laboratory – if necessary in coolers. Coolers with temperature monitors are ideal, to ensure that peak storage temperature is maintained.

### Tip

If you take samples from sacks or bags, the insertion points can be reclosed with special labels. You can write on these labels, which will even stick firmly onto soiled surfaces.

Contact us via e-mail  
[labinfo@dyna-labware.com](mailto:labinfo@dyna-labware.com)  
or telephone 800-828-6595  
with any further questions.



# Overview on sampling equipment

Product	Page	Liquids, normal	Liquids, aggressive	Liquids, flammable	Viscous substances/muds	Ice	Bulk goods, powders	Bottom sampling	Pharma	Sterile
All-layer Sampler	26-27						x			
AquaSampler	18	x	x							
Beafsteaker	23				x					
close-it food	29						x	x		
Dip sampler	11	x								
Dippas	8-9	x							x	x
Dippers	7	x	x							
Disposable Disposampler	20	x	x		x				x	x
EasySampler	25				x			x		
IceBorer	23				x	x				
Liquid-sampler	11	x								
LiquiSampler	17	x	x							
MicroSampler	31						x		x	
Milky	28						x			
Mini ViscoSampler	19				x				x	
MiniSampler	12-15	x	x							
Pigment lance	22						x			
Profi-Sampler	12-15	x	x							
QualiRod	22				x					
QuickPicker	24-25						x		x	
Sampler / Ladle	10	x	x							
Scoop / Ladle	10	x								
Tubus	28						x			
ViscoSampler	16				x					
Zone sampler	27						x		x	

**SAVE 10%** All orders over \$250!

## Dippers HDPE

- Graduated
- PVC hand grip
- 2 Pour spouts
- 500ml & 1000ml beaker

High density polyethylene dipper for removing samples from large tanks. Lightweight but durable. Available in six popular sizes. **Additional sizes and configurations available upon request.**

### DIPPERS HDPE

	107075	107085	107095	106505	106515	106525
Handle Length feet	3	6	12*	3	6	12*
Capacity ml	500	500	500	1000	1000	1000
Price Each US\$	34.71	50.18	99.18	49.47	60.42	101.45

\*12-foot size supplied with 2-piece handle for economy in shipping and storage.

*Additional sizes and configurations available for HDPE Dippers!*



## Dippers PTFE

- Totally chemically resistant and inert
- Shafts have a steel core, fully encapsulated in PTFE, for rigidity
- Additional shafts available to extend the dippers

Totally inert and non-contaminating. Extendible screw-in shafts have a steel core for rigidity and are fully encapsulated in PTFE. The basic unit consists of a beaker with a single 24" (600mm) shaft.

### DIPPERS PTFE

307024	-0100	-0250	-0500	-1000
Capacity ml	100	250	500	1000
Body Diameter mm	54	66	80	100
Shaft Length mm	600	600	600	600
Price Each US\$	127.96	141.65	171.10	223.12

307024-HAND Replacement screw-on handle/extension for above dippers \$80.31 each



# Dippas® | sterile sampler and test container all in one

sterile



Dippas are individually wrapped to ensure complete sterility.

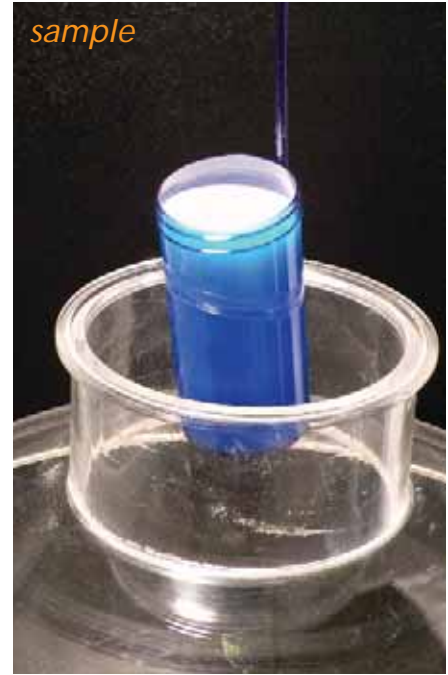
open



Available in either transparent polystyrene or shatterproof polypropylene in three different capacities.

Blue Dippas and Dippers are highly visible in product samples.

sample



Designed for sample collection and dispatch from one source, thus eliminating the risk of cross contamination.

cap



Closures are supplied in either PP or Metal in PS Dippas and in PE or PP in Polypropylene dippers.

break



Handles are easily removed, enabling the sample to be sent away for analysis.

transport



Sample collection and transportation to the laboratory in a single container.

“Dippas®” Sterile PS and Dippers Sterile PP 

- Designed for sample collection and dispatch from one source, thus eliminating the risk of cross contamination
- Dippas® are available in transparent polystyrene with screw closures
- Dippers are available in shatterproof polypropylene with screw or hinged closures
- Handles are easily removable, facilitating transport
- Supplied sterile by irradiation and individually wrapped to ensure complete sterility
- Blue products are highly visible in product samples

If accidentally dropped in a vat of aqueous liquid, polypropylene Dippers will surface for easy retrieval

“DIPPAS®” STERILE CLEAR PS

507054	-0030	-0100	-0250
Handle Length mm	200	385	330
Capacity ml	30	100	250
Cap Material	PP	METAL	METAL
Height mm	93.1	76.4	120.6
Diameter	30.1	50.5	65.1
Case Quantity	50	100	50
Case Price US\$	95.36	285.30	181.49

“DIPPAS®” STERILE BLUE PS

507054	-B030	-B100	-B250
Handle Length mm	200	385	330
Capacity ml	30	100	250
Cap Material	PP	METAL	METAL
Height mm	93.1	76.4	120.6
Diameter	30.1	50.5	65.1
Case Quantity	50	100	50
Case Price US\$	101.05	286.71	186.09

DIPPERS STERILE BLUE PP

507044	-0040	-0045*	-0090*	-0125
Handle Length mm	220	220	220	220
Capacity ml	40	45	90	125
Cap Material	PE	PP	PP	PE
Height mm	70	85	80	76
Diameter	30	30	45	51
Case Quantity	250	250	150	100
Case Price US\$	539.38	550.17	359.02	297.78

\*supplied with hinged closures



507054 series



507044 series



## Sampler/Ladle PTFE

- Totally chemically resistant and inert
- Shafts have a steel core, fully encapsulated in PTFE, for rigidity

This sampler-ladle is made from pure PTFE and is supplied with a fixed 6" (150mm) handle. Totally inert. 10ml capacity. Dimensions: top ID 1" and bottom OD is 3/4".

307014

Sampler/Ladle 10ml

\$38.21 each



## Scoops/Ladles HDPE

High density polyethylene, high-temperature extra heavy duty bowl with securely welded solid handle. Handy for sampling and dispensing corrosive liquids. Note: 600ml size is graduated and supplied with 2 pour spouts. **Additional sizes available upon request.**

### SCOOPS & LADLES HDPE

108085	-50	-100	-250	-600	-1000
Capacity ml	50	100	250	600	1000
Handle Length inches	9	9	9	10	12
Case Quantity	12	12	12	12	6
Case Price US\$	130.84	141.30	154.46	169.84	197.26

*Additional sizes and configurations available for HDPE Drum and Liquid Samplers!*

## Drum Sampler HDPE

Similar to the Liquid Sampler below, but specifically designed for easy, effective sampling of 55 gallon drums or vessels with openings as small as 2" ID. The included bottle easily passes through the opening for quick filling. The handle prevents dropping of sampler into the opening of the drum. Rod 3' length by 1 1/4" O.D. **Additional sizes and configurations available upon request.**

114505-0100	Drum Sampler, 3' handle, 100mL bottle
114505-0500	Drum Sampler, 3' handle, 500mL bottle
202445-0100	100ml Polypropylene Graduated Bottle
202445-0500	500ml Polypropylene Graduated Bottle

## Liquid Sampler HDPE- New Sizes!

Manufactured from chemically resistant high density polyethylene, this sampling device is perfect for corrosive environments and for hard to reach places. The included bottle screws into the end of the handle and is filled via four 5mm diameter ports (2 allowing liquid to enter and 2 allowing air to escape.) Excellent for industrial and environmental applications. Both 6' and 8' rod length by 1 1/4" O.D. **Additional sizes and configurations available upon request.**

114515-0100	Liquid Sampler - 6' handle, 100mL bottle
114515-0500	Liquid Sampler - 6' handle, 500mL bottle
114525-0100	Drum Sampler - 8' handle*, 100mL bottle
114525-0500	Drum Sampler - 8' handle*, 500mL bottle

\*2-piece handle for UPS economy shipment.



## DipSampler - for liquids

Made of PP for rapid and simple spot checks of liquids. The dip samplers are transparent and enable the contents to be seen clearly. Upper end with reflux valve, lower end with ball valve.

- Transparent PP
- Type 200 variable step by step from 100 to 200 cm
- Special sizes on request
- All-layer sample and target sample

### Operation

#### All-layer sample

1. Insert the dip sampler with opened valve slowly into the liquid
2. Close the valve
3. Withdraw the dip sampler. Remove the sample.

#### Target sample

1. Insert the dip sampler with closed valve into the liquid until the target spot
2. Open the valve. The liquid flows in
3. Close the valve
4. Withdraw the dip sampler. Remove the sample.

### DIPSAMPLER

5315	-0050	-0100	-0200
Length cm	50	100	200
Diameter mm	22	22	22
Price Each US\$	75.06	80.56	95.43



## Liquid-Sampler - single hand operation

Liquid-Sampler for single hand operation. The valve is opened and closed using your thumb for type 1 or semi automatically for type 2. Made of AISI 304 stainless steel.

### LIQUID-SAMPLER

5326	① -0001	① -0002	② -0003	② -0004
Length mm	460	540	455	535
Diameter mm	32	32	32	32
Capacity mL	50	100	50	100
Price Each US\$	278.91	302.21	315.34	341.32

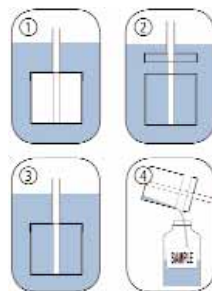


## Liquid Cup Sampler - single hand operation

Collects liquids of varying viscosity. Media containing particles can also be sampled without difficulty. The sampler can be used in the fields of chemistry, foodstuffs and cosmetics. The cup can be unscrewed from the stem, allowing easy cleaning. Made completely of AISI 316 stainless steel.

### LIQUID CUP SAMPLER

5357	-0001
Total Length mm	1120
Container Diameter mm	55
Price Each US\$	1,391.07



1. Place the collector at the desired depth.
2. Open the lid using the handle. The liquid flows in.
3. Close the filled collector and remove it.
4. Empty the sample into the sample bottle.



# MiniSampler & ProfiSampler | comfortable, quick and clean sampling



With the MiniSampler and ProfiSampler the sample liquid only comes into contact with the suction hose and the sample bottle. The possibility of cross-contamination is greatly reduced therefore. Immediately after having taken the sample, the bottles are sealed using an airtight cap and with tamper-evident safety ring seal. The single-use, flexible, suction hose can be quickly replaced, thus ensuring that the samples are never contaminated. If necessary, a new hose can be used for every single sample. Due to its small diameter (5/16" / 8mm) and flexibility the hose can reach sampling areas which are otherwise inaccessible.

Three models are available

**MiniSampler PE** for general sampling, max. suction lift 5 m\*

**MiniSampler PTFE** for ultra-pure sampling, max. suction lift 5 m\*

**ProfiSampler PP** for industrial use, max. suction lift 6 m\*

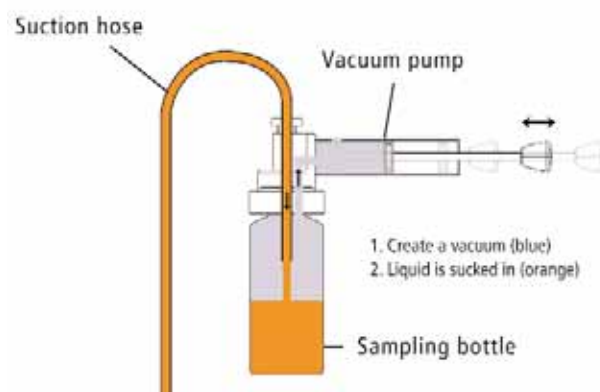
\*depending on medium

- Also suitable for viscous oils
- Complete in a practical transport case

Not for aggressive acids. Vapors could damage pump.

## Operation

1. Place hose and bottle in pump.
2. Insert hose end to desired sample depth.
3. Move the pump piston back and forth and collect the sample. The liquid flows directly into the bottle.
4. Take off the filled bottles, close and label them.



SAVE  
10%

All orders over \$250!

# MiniSampler & ProfiSampler I *sampling highest degree of purity*

## MiniSampler PE - for general sampling

Contents: Vacuum pump, 10 PE bottles 100 ml, 10 m PE suction hose 6 x 8 mm, 1 hose cutter, 1 hose weight made of stainless steel AISI 304, 20 seal-it bottle seals

- Ideal for sampling from drums, canisters, tanks
- Sampler with accessories complete in transport case

**5305-0100**                      **MiniSampler with Case, PE**                      **\$289.80 each**

### BOTTLES FOR USE WITH MINISAMPLER PE

	<b>0340</b>	<b>-0100</b>	<b>-0250</b>	<b>-0500</b>	<b>-1000</b>
Capacity mL		100	250	500	1000
Materials		PE	PE	PE	PE
Pack Quantity		25	25	25	25
Price Each US\$		75.71	96.05	111.76	144.20

### ACCESSORIES FOR USE WITH MINISAMPLER PE

	<b>8878-0608</b>	<b>8805-0608</b>	<b>5305-0010</b>
Description	Suction hose, PE reel of 100 m	Suction hose, PE reel of 10 m	MiniSampler pump
Price Each US\$	76.98	27.26	115.22

	<b>5399-0004</b>	<b>0006-9506</b>	<b>5305-0209</b>
Description	Label Reference Sample sheet of 24 labels	Hose cutter	Adapter for glass thread GL45
Price Each US\$	5.32	13.94	250.82



## MiniSampler PTFE - for ultra pure sampling

Contents: Vacuum pump, 1 PFA bottle 180 ml, 5 m PTFE suction hose 6 x 8 mm, 1 hose cutter, 1 hose weight made of stainless steel AISI 304, 20 seal-it bottle seals

- Ideal wherever the highest degree of purity is required.
- Sampler with accessories complete in transport case.

**5305-0110**                      **MiniSampler with Case, PTFE**                      **\$487.11 each**

### BOTTLES FOR USE WITH MINISAMPLER PTFE

	<b>6205</b>	<b>-0090</b>	<b>-0180</b>
Capacity mL		90	180
Materials		PFA	PFA
Price Each US \$		95.12	119.62

### ACCESSORIES FOR USE WITH MINISAMPLER PTFE

	<b>8804-0608</b>	<b>5399-0004</b>
Description	Suction hose, PTFE reel of 5 m	Label Reference Sample sheet of 24 adhesive labels
Price Each US\$	71.46	5.32

	<b>5305-0011</b>	<b>5305-1020</b>
Description	MiniSampler pump without Adapter	Adapter PTFE for sampling tubes 6205-0090 and 6205-0180
Price Each US\$	104.92	188.79

	<b>0006-9506</b>	<b>5305-0209</b>
Description	Hose cutter	Adapter for glass thread GL45
Price Each US\$	13.94	250.82



# ProfiSampler I *vacuum-operated sample collector for robust industrial use*



## Advantages

- Larger dimensions and ergonomic handle allow handling with rubber gloves, as is often required in practical sampling.
- Support stand with 3 feet ensures that the ProfiSampler is stable.
- Can be supplied with rolls of PE or PTFE sampling hose wherever the highest degree of purity is required.
- Can be supplied with optimized, straight suction tube for simpler sampling.
- Transport case for tidy transport and disposal
- Filling level control, automatic return flow and overflow protection by built-in venting valve.
- Optimized suction volume 200 ml, suction pressure 0.5 bar and suction depth down to 4 m/water.

## ProfiSampler

While the MiniSampler (see page 13) is designed for laboratory use, the ProfiSampler has been specially developed for rough industrial use.

## Uses

Sampling liquids in drums, tanks, road tankers, railroad wagons, ships, lakes, ground water.

## Vacuum samplers

have the advantage that the liquid only comes into contact with the sample tubing and not with the pump itself. This ensures that contamination is kept as low as possible and that the purity of the sample is ideal. The liquid passes through the sample tubing, enters the original sample bottle directly and then goes straight to the laboratory.

## ProfiSampler PP

For general sampling, for weak acids, bases, detergents, chemical baths\*.

Made of solid, chemical-resistant polypropylene. With GL 40 bottle thread for Multi-Bottle 500 ml.

\* Always check the chemical resistance of parts coming into contact with the sample. Wear protective clothing!

## Accessories

The ProfiSampler can be extended by useful accessories developed in practice.

**SAVE 10%** All orders over \$250!

# ProfiSampler I vacuum-operated sample collector for robust industrial use

## Suction tubes PE

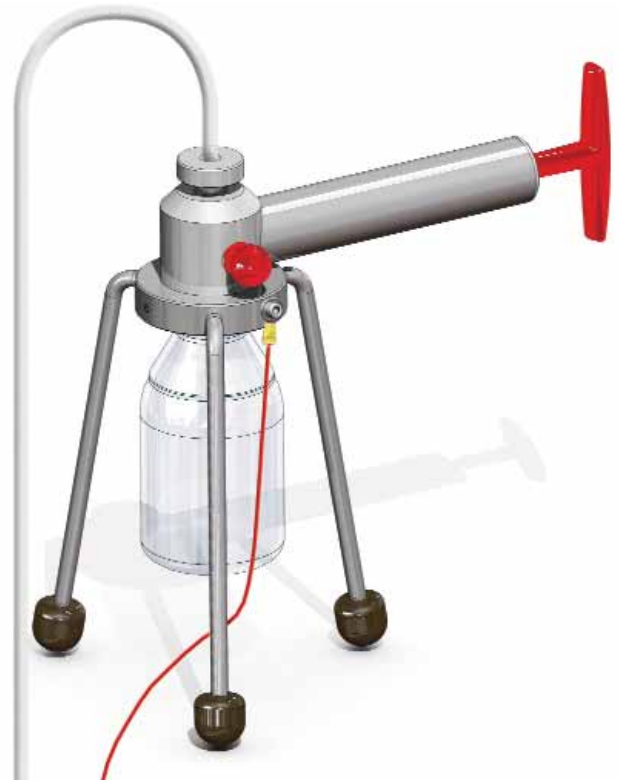
can be immersed absolutely straight in the container. The suction tube is made of PE for general sampling. 220 cm long with bent end piece which can be inserted directly in the ProfiSampler. Diameter 6 x 8 mm.

**Contamination banned!** In practice the low-priced tubes are only used once and then disposed of, instead of being subjected to a costly cleaning process. Tubes are not autoclavable.

## Suction tube case

for the practical transport of new suction tubes and the safe storage of used ones. For 100 suction tubes 220 cm long.

- Sampling bottles in different materials and sizes
- Sampling bottles 5314-0050 and -0100 now made of borosilicate glass for even better temperature and acid resistance
- Suction height from surface of liquid 5 m WC



## ProfiSampler Polypropylene

Consisting of: solid PP vacuum pump, with feet, venting valve and GL 40 bottle thread, 1 x 250 ml PP bottle, 10 m PE suction hose (roll), 1 tubing cutter, 1 hose weight made of AISI 304 stainless steel, 24 sample labels, 24 seal-it bottle seals.

**5305-1000**      **ProfiSampler Polypropylene**      **\$445.54 each**



## SUCTION HOSE ON ROLL

	<b>8878-0608</b>	<b>8805-0608</b>	<b>8804-0608</b>
Material	PE	PE	PTFE
Length	6 x 8 mm, roll with 100 m	6 x 8 mm, roll with 10 m	6 x 8 mm, roll with 5 m
Price Each US\$	76.98	27.26	71.46

## SAMPLING BOTTLES

	<b>5314-0010</b>	<b>5314-0025</b>	<b>0319-0250</b>	<b>5314-0050</b>	<b>5314-0100</b>
Material	Glass	Glass	PP	Glass	Glass
Capacity mL	100	250	250	500	1000
Cap	GL 45	GL 45	GL 40	GL 45	GL 45
Pack Quantity	10	10	10	10	10
Price Each US\$	11.74	18.50	28.84	18.97	22.22

## SUCTION TUBES, STRAIGHT

	<b>5305</b>	<b>-1022</b>	<b>-1029</b>
Material	PE translucent		Transport Case for straight tubes
Length cm	220		
Pack Quantity	10		
Pack Price US\$	185.12		211.93 each



# ViscoSampler | the ultra-pure collector for medium viscosity substances



Color coded handles



With depth marks and scraping ring



Discharge funnel

## ViscoSampler - the ultra-pure sample collector for medium viscosity substances

ViscoSampler with powerful suction for viscous media. The media is drawn up and discharged using the suction flask made of transparent PP or ultra-pure and chemically inert PTFE/FEP for contamination-free sampling. Specially developed for viscous substances; such as slurries, silt, wet clay and soil samples, soil sediments, oils, emulsions, creams etc.

**Color coded handles** in red, blue, green, yellow, white and black avoid confusion. Red is the standard color supplied with the ViscoSampler.

**Easy cleaning** – all surfaces are poreless and without crevices to prevent dirt accumulation. Only those round threads tried and tested in food hygiene are employed. Disassembly and cleaning is very easy.

- Available in transparent PP or FEP/PTFE
- Three sizes

### VISCOSAMPLER

	①	①	①
<b>5331</b>	<b>-2060</b>	<b>-2100</b>	<b>-2200</b>
Material	PTFE/FEP	PTFE/FEP	PTFE/FEP
Length cm	60	100	200
Diameter mm	25	25	25
Capacity mL	160	300	650
Price Each US \$	555.25	623.52	881.71

	①	①	①
<b>5331</b>	<b>-1060</b>	<b>-1100</b>	<b>-1200</b>
Material	PP	PP	PP
Length cm	60	100	200
Diameter mm	25	25	25
Capacity mL	160	300	650
Price Each US \$	411.58	487.11	962.02

### ACCESSORIES

	②		
	<b>5331-0020</b>	<b>5304-0100</b>	<b>5618-0100</b>
Description	5 handles, yellow green, blue, white and black	Cleaning brush 100cm for tubes with diameter 15 - 26 mm	Safety stand ID 55mm
Price Each US \$	84.31	90.64	80.56

**SAVE 10%** All orders over \$250!

## LiquiSampler - the ultra-pure sample collector for liquids

**LiquiSampler** for liquids, according to DIN 53 242. Made of either ultra-pure and chemically inert PTFE/FEP for contamination-free sampling or cost effective PP.

Sampling from open and closed barrels, vats, tanks, silos, open waters (ponds, streams, lakes, rivers). Fits all commercially available vats and barrels with openings of at least 25 mm diameter.

**Color coded push-buttons** in red, blue, green, yellow, white and black, identifies usage.

**Easy cleaning** – all surfaces are free of pores and crevices, preventing accumulation of dirt. Only round screw threads proven in foodstuffs hygiene are used. Disassembly and cleaning is extremely simple.

- Easy-to-use one-hand push-button operation
- Transparent
- For point sampling, cross-sectional sampling and bottom sampling

Any mistakes made during sampling or sampling division will inevitably lead to incorrect analytical results! Take samples, but do it right! How this can be done: see page 2.

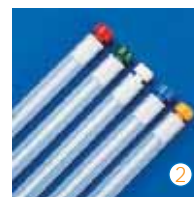
### LIQUISAMPLER

	① -2060	① -2100	① -2200
Material	PTFE/FEP	PTFE/FEP	PTFE/FEP
Length cm	60	100	200
Diameter mm	25	25	25
Capacity mL	150	250	500
Price Each US\$	411.55	543.08	755.01

	① -1060	① -1100	① -1200
Material	PP	PP	PP
Length cm	60	100	200
Diameter mm	25	25	25
Capacity mL	150	250	500
Price Each US\$	267.91	350.69	530.90

### ACCESSORIES

	② 5330-0149	5304-0100	5618-0100
Description	5 color coded, push buttons, yellow green, blue, white and black (red = standard)	Cleaning brush 100cm for tubes with diameter 15 - 26 mm	Safety stand ID 55mm
Price Each US\$	50.93	90.64	80.56



Color coded handles



With depth marks and scraping ring



Discharge funnel



It can't be easier - with push-button



①

# AquaSampler / ultra-pure, non-stick, highly transparent



## AquaSampler - ultra-pure non-stick, highly transparent

AquaSampler collects ground water samples from wells, pits and other sources. Fits all normal well shafts down to 2" diameter without tilting or getting stuck. Ultrapure materials guarantee the greatest possible sample purity. Easy to clean thanks to rounded edges and threads.

- FEP/PTFE – ultrapure, anti-adhesive surface

### Accessories

- Sturdy manually operated cable reel
- Plunging cable, AISI 304 stainless steel, PTFE coated



Safe and sure pouring



### AQUASAMPLER WITHOUT CABLES

5308	-0350	-0700	-1050
Capacity mL	350	700	1050
Total Length mm	400	760	1070
Outside Diam. mm	46	46	46
Price Each US\$	440.85	521.18	588.86



Hand-reel

### HAND-SPOOL PP WITH WIRE CABLE AISI 316, COVERED WITH PTFE

5309	-0010	-0110	-0125	-0150
Description	Hand Spool Without Cable	Wire Cable 10 m, AISI 304/PTFE	Wire Cable 25 m, AISI 304/PTFE	Wire Cable 50 m, AISI 304/PTFE
Price Each US \$	124.24	61.36	146.14	280.09

### ACCESSORIES FOR AQUASAMPLER

	3600-2120
Description	Transport Case
Price Each US\$	180.21



## Mini ViscoSampler - for small quantities

For viscous substances like pastes, muds, creams, oils. Made of AISI 316 stainless steel, electropolished and ideal for use in pharmaceutical areas. The sample is drawn in using the pump rod and directly conveyed to the sampling container. Easy cleaning for flawless sampling. Suction capacity 30 ml to 75 ml. Depending on the viscosity, the unscrewable suction head can be fitted with suction drills of 2 mm to 6 mm.

- AISI 316 Stainless steel
- Ideal in pharmaceutical areas
- Sterilizable
- Diameter 15 mm



### MINI VISCOSAMPLER WITH 2MM SUCTION HEAD

5341	-1060	-1100	-1150
Total Length cm	60	100	150
Price Each US\$	421.30	492.02	608.89

### SUCTION HEADS - MINI VISCOSAMPLER exchangeable

5341	-1002	-1004	-1006
Diameter mm	2	4	6
Price Each US\$	67.92	67.92	67.92



## Valve lance

Sampling insertion device acc. to DIN 51750 pt. 3 and DIN 53242 pt. 3 for multilayer samples of pastes, viscous and semiliquid substances. Especially useful when sampling layered pastes, as all layers remain intact. Stainless steel AISI 316, length 550 mm or 800 mm with optimized hinges for easier cleaning – fully detachable.

### Operation

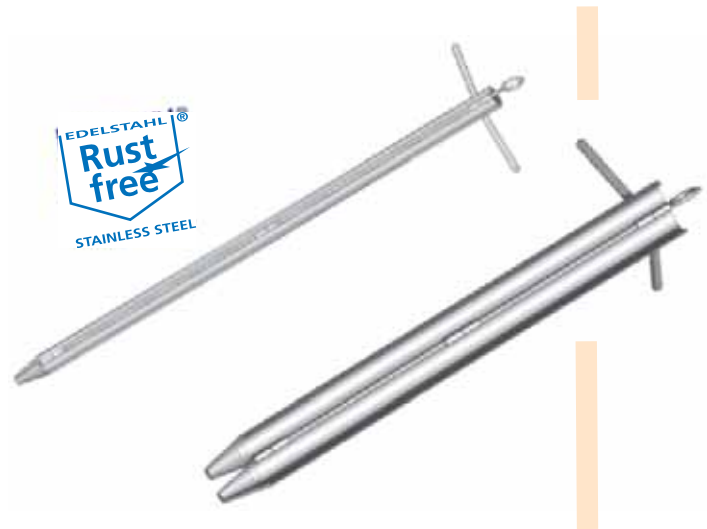
For **viscous substances**, the valve lance is inserted to the bottom whilst **closed**, then opened and then withdrawn again closed. When sampling **pastes**, the valve lance is inserted to the bottom whilst **opened**, then closed and withdrawn again.

### VALVE LANCE

5359	-1600	-1800
Material	Stainless Steel AISI 316	Stainless Steel AISI 316
Length mm	550	800
Price Each US\$	2,306.73	2,882.83

### ACCESSORIES FOR VALVE LANCE

	3600-2120
Description	Transport Case
Price Each US\$	180.21



## *Disposable DispoSampler | collect samples - instead of wasting time cleaning!*



Single use DispoSamplers are cost effective. They help prevent incorrect results from cross contamination while saving on cleaning time and effort.

The cleaning process is often also laborious and complicated, particularly with fatty, strongly adhesive or toxic substances. With DispoSamplers, trained personnel can concentrate on taking samples correctly.

Useful in the pharmaceutical, chemical, food and cosmetic industries, the disposable DispoSamplers are made of environmentally-friendly PE or PP and can be recycled without any problem.

**Available sterile or non sterile, multiple pieces per pack.**

**SAVE 10%** All orders over \$250!

# Disposable DispoSampler I *unpack, take sample, recycle*

- Disposable product – unpack, take sample, recycle!
- No contamination by other samples
- No complicated, time-consuming and expensive cleaning
- Manufactured under clean room conditions (except ZoneDispo)
- Individually packed in plastic film

**Packs with 20 pieces**  
**(AquaDispo, packs with 24 pieces)**  
**(ZoneDispo 20 pieces/plastic film)**

- Sterilized by gamma irradiation-option
- For liquids, bulk goods and viscous media
- Available in lengths of 500 mm or 1000 mm
- Diameter 25 mm (AquaDispo 46 mm)
- Made of environmentally-friendly, recyclable PE or PP

- ① **AquaDispo** for sampling ground water or other aqueous neutral products. AquaDispo is lowered to the required depth with the lowering cable. Simple emptying by pouring out (top) or via valve (bottom).
- ② **ViscoDispo** for high-viscosity liquids up to max. 100,000 mPa·s.
- ③ **ZoneDispo** for pourable bulk goods up to 2 mm particle size. Hole diameter 11 mm.
- ④ **MicroDispo** for pourable bulk goods up to 0.5 mm particle size.
- ⑤ **LiquiDispo** for low-viscosity liquids up to approximately 10,000 mPa·s.

## DISPOSAMPLER

	⑤	⑤	⑤	⑤
<b>5393</b>	<b>-1120</b>	<b>-1121</b>	<b>-1130</b>	<b>-1131</b>
Description	LiquiDispo	LiquiDispo	LiquiDispo	LiquiDispo
Material	HDPE	HDPE Sterile	HDPE	HDPE Sterile
Capacity mL	100	100	190	190
Length mm	500	500	1000	1000
Price Pack of 20 US\$	292.32	394.66	359.71	479.68

	④	④	④	④
<b>5393</b>	<b>-2220</b>	<b>-2221</b>	<b>-2230</b>	<b>-2231</b>
Description	MicroDispo	MicroDispo	MicroDispo	MicroDispo
Material	HDPE	HDPE Sterile	HDPE	HDPE Sterile
Capacity mL	5	5	5	5
Length mm	500	500	1000	1000
Price Pack of 20 US\$	329.80	432.13	397.18	517.15

	④	④	④	④
<b>5393</b>	<b>-2240</b>	<b>-2241</b>	<b>-2250</b>	<b>-2251</b>
Description	MicroDispo	MicroDispo	MicroDispo	MicroDispo
Material	HDPE	HDPE Sterile	HDPE	HDPE Sterile
Capacity mL	10	10	10	10
Length mm	500	500	1000	1000
Price Pack of 20 US\$	329.80	432.13	397.18	517.15

	②	②	②	②
<b>5393</b>	<b>-3320</b>	<b>-3321</b>	<b>-3330</b>	<b>-3331</b>
Description	ViscoDispo	ViscoDispo	ViscoDispo	ViscoDispo
Material	HDPE	HDPE Sterile	HDPE	HDPE Sterile
Capacity mL	100	100	190	190
Length mm	500	500	1000	1000
Price Pack of 20 US\$	292.32	394.66	359.71	479.68

	③	③	⑤	⑤
<b>5393</b>	<b>-4420</b>	<b>-4430</b>	<b>5308-0350</b>	<b>5309-0201</b>
Description	ZoneDispo	ZoneDispo	AquaDispo	Lowering Cable
Material	PP	PP	FEP	PP - Red
Capacity mL	100	190	350	
Length mm	500	1000	400	10M
Number of Holes	3	5	1	
Diameter mm	NA	NA	46	
Price US\$	861.84 pk 20	1,149.37 pk 20	440.85 pk 24	18.97 each



# QualiRod & Pigment Lance / ideal for pastes



## QualiRod - for pastes

**Conical** hand-drill, conically shaped, with sharp cutting edges and a solid handle. For taking samples from soft, paste-like substances (cheese, butter, soap, wax, etc.).



- AISI 304 Stainless steel
- Sterilizable
- According to EN/ISO 707



**Cylindrical** hollow drill with a sharp cutting edge. The hand-drill can easily be driven into paste-like and semi-solid substances by a rotating movement. The samples cut out are subsequently removed from the drill using the push-rod ejector. Drilling depth 200 mm, total length 260 mm, weight 386 g. Inside diameter 8 mm, Outside diameter 10 mm.



### QUALIROD 5311

Description  
Drilling Depth mm  
Price Each US\$

①  
-0001

Conical  
120  
133.95

①  
-0002

Conical  
170  
158.90

②  
-0003

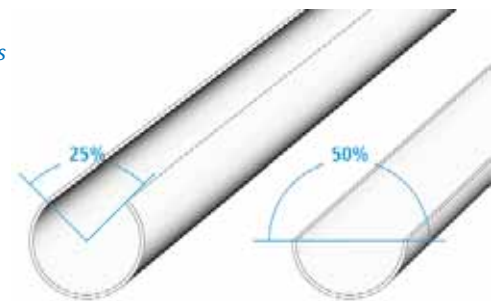
Cylindrical  
200  
195.43

## Pigment lance - for pastes and pigments

For pigments and pastes and agglomerating bulk goods.

### Two models are available

- With half-open flute 50%
- With one-quarter-open flute 25%



### Operation

1. Insert the lance to the desired depth.
2. Turn handle; the sample is collected in the open flute.
3. Withdraw the lance.
4. Remove the sample.

### PIGMENT LANCE

5369	-0300	-0310
Length mm	300	300
Diameter mm	30	30
Flute openings	25%	50%
Capacity mL	145	85
Material	AISI 316	AISI 316
Price Each US\$	323.88	350.69

5369	-0600	-0610
Length mm	600	600
Diameter mm	30	30
Flute openings	25%	50%
Capacity mL	312	179
Material	AISI 316	AISI 316
Price Each US\$	465.21	506.54

5369	-0900	-0910
Length mm	900	900
Diameter mm	30	30
Flute openings	25%	50%
Capacity mL	480	273
Material	AISI 316	AISI 316
Price Each US\$	625.98	677.03



# BeefSteaker & Ice borer / for semi-solid substances

## BeefSteaker - as per HACCP

For taking bacteriological samples from the surfaces of dead animals (cattle, hogs, sheep, goats and horses) in slaughter house and in butcher shops. The BeefSteaker is used to cut out a 25 mm round sample from the animal's skin. The stainless steel cutter allows the sample to be cut out easily.

The BeefSteaker can also be used for other sampling purposes (e.g. histology, medicine, food products cheese factories, agriculture)

The BeefSteaker can be steam-sterilized or flamed. A hole in the crown prevents air compression and is used for ejecting the sample.

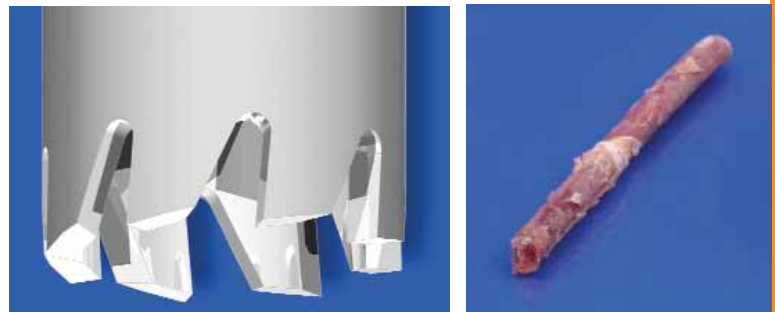


### BEAFSTEAKER

	5388-1000	3600-0101
Description	BeafSteaker	Transport Case
Cutter Crown Diameter mm	25	NA
Price Each US\$	365.83	19.46

## Ice borer - for deep-frozen and semi-solid substances

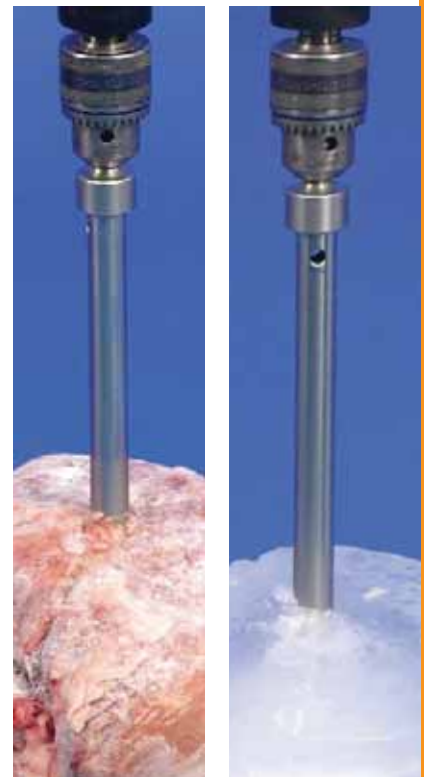
For deep-frozen products in the food industry and semi-solid substances. The sharp sawing crown of the very robust hollow borer rapidly cuts into the sample. A cylindrical sample (cross-sectional sample) with a diameter of 18 mm and a length of up to 200 mm can be cut out. Consists of three parts: borer, borer head for use in conventional drills and rod for pressing the cylindrical sample out of the borer head.



- made of AISI 316 stainless steel
- sterilizable
- 200 mm long, 21 or 54 mm outer diameter

### ICE BORER

	-0200	-2010
Description	Complete with case	Complete with case
Inner Diameter mm	18	50
Price Each US\$	501.74	618.60



# QuickPicker I collects samples quickly and channels them directly into the sampling bottle



1. Push the point of QuickPicker into the sack to the desired depth.



2. Pull QuickPicker out again. Sample material is drawn out in the open, half-rounded scoop.



3. Tilt QuickPicker backwards, now the sample falls directly into the sampling bottle.



4. Seal the punctured sack using close-it (see page 26).  
5. Remove sampling bottle, screw on the cap.  
6. Write the sample designation on the bottle.



Unscrewable tip for easy cleaning

Rounded grooves for sure grip

Sampling bottles made of PP,  
Volume 250mL

Stainless steel 316 (1.4401);  
electropolished surface

Volume 75mL

Insertion depth 30 cm

Sampling directly into bottle;  
no cross-contamination

PP, transparent, scratch-proof,  
sterilizable, economically priced

## QuickPicker - *quick sample collection and transfer*

Particularly suitable for taking direct samples of bulk goods from sacks, Big-Bags or open containers and then filling them directly into original sample bottles. QuickPicker is uncomplicated to use and clean. No undercuts or edges ensure no sample residues which could falsify subsequent samples. QuickPicker is delivered complete with 2 sample bottles and cleaning brush.

- Sampling depth 30 cm, diameter 25 mm
- Made of AISI 316 stainless steel, or transparent PP for aggressive powders
- Sample bottles made of LDPE or PP
- Removable point, easy to clean

The QuickPicker is now also available in polypropylene. Particularly suitable for aggressive chemicals. Transparent, scratch-proof, sterilizable, economically priced. Corresponds to ISTA standard for seed lengths of 10 mm (wheat, oats) and 5 mm (flax, vetches)

### QUICKPICKER

	①	②
<b>5322</b>	<b>-1300</b>	<b>-0300</b>
Tube material	AISI 316 SS	PP transparent
Insertion length cm	30	30
Total length cm	50	50
Capacity mL	75	75
Price Each US\$	367.79	231.38

### SAMPLE BOTTLES

	0318-0250	0319-0250
Material	LDPE, transparent 250mL	PP, transparent 250mL
Pack Quantity	20	10
Price Each US\$	53.35	28.84

### ACCESSORIES

	3600-3000	5304-0060
Description	Transport case	Cleaning brush
Price Each US\$	47.20	71.31



## EasySampler - *easy to empty*

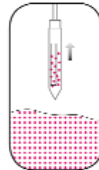
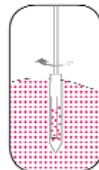
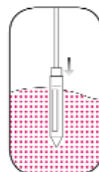
New type of sampler for taking numerous samples from bulk materials quickly and easily. Emptying has been greatly simplified and in this model takes place via the tip. The advantage: the sample can be emptied directly into the sample container without having to disassemble the EasySampler, in order to obtain a mixed sample for instance. The bulk material must be free flowing or self-flowing.

- Completely made from AISI 316 stainless steel
- For free-flowing bulk materials
- For sampling openings from 52 mm dia.
- Sample chamber length 500 mm
- Autoclavable

Please note: EasySampler has been developed in cooperation with an international chemical concern based in Ludwigshafen, Germany

### EASYSAMPLER

	5360-1000
Tube Diameter mm	32
Total Length mm	1045
Capacity mL	200
Price Each US\$	1.106.08



# Zone samplers I for all kinds of bulk goods, according to DIN 53 242



- ① **Multi-Sampler**
- Anodized aluminum
  - Closed chambers
  - Color coding system
  - 25 mm diameter
  - Three lengths



- ② **Multi-Sampler**
- Rust-free stainless steel 316
  - Closed chambers
  - Color coding system
  - 25 mm diameter
  - Three lengths



- ③ **Multi-Sampler**
- Rust-free stainless steel 316 with PTFE collection chambers to lower weight
  - Closed chambers
  - Color coding system
  - 25 mm diameter
  - Three lengths



- ④ **Uno-Sampler**
- Rust-free stainless steel 316
  - Closed chambers
  - Color coding system
  - 25 mm diameter
  - Three lengths



- ⑤ **All-Layer Sampler**
- Anodized aluminum
  - Rust-free stainless steel 316
  - Open inner tube
  - Large collection volume
  - Without chambers
  - 25 mm diameter
  - Three lengths



- Zone Sampler Emptying Device**
- Emptying device, complete with three funnels
  - Stainless steel (1.4301)
  - 100 cm length

Separate emptying of multi-sampler chambers can be done with Quali-Paper or sealing sleeves. With the emptying device it is faster and more comfortably. The sample chambers can be emptied directly into the sampling tubes.

Place multi-sampler simply onto the emptying device, adjust funnels and tubes, open sample chambers - done. It saves time, no contamination of samples, no mixing. The funnels can be placed variably to adjust them to the sampling chambers. The emptying device fits to multi-samplers 550 and 850 mm length. Emptying devices can be screwed together, so they can be used with every length.

5317-0030 Zone Sampler Emptying Device \$555.17 each



# Zone samplers I multi-samples from several predefined sample depths

## Zone Samplers - 25 mm diameter for multi-samples

- Smallest possible gap between inner and outer tube
- Easy cleaning, removable tip
- Color coding
- 3 lengths: 550mm for sacks, 850mm for drums, 1500mm for big bags, silos and tanks

Multi-sampler made of anodized aluminum, with closed chambers, color coding system, 25 mm diameter for multi-samples from several predefined sample depths. Ask about special accessories: sealing sleeves, Quali-Paper, cleaning brushes, emptying device and "close-it" sealing labels. A 25-cm Zone Sampler is also available.

1. Turn handle to close chamber.
2. Push in sampler to required depth.
3. Turn handle to open chamber, sample flows into chamber.
4. Turn handle to close chamber again.
5. Pull out sampler.
6. Empty chamber onto Quali-Paper.
7. Close container opening with close-it control seal

### ① MULTI-SAMPLER ALUMINUM, 25 MM DIAMETER\*

5317	-1058	-1085	-1150
Total length mm	550	850	1500
Sampling depth mm	430	710	1355
Number of chambers	3	3	5
Chamber capacity mL	14	17	17
Price Each US\$	299.52	326.34	421.31

### ② MULTI-SAMPLER V4A (AISA 316 SS), 25 MM DIAMETER\*

5316	-3055	-3085	-3150
Total length mm	550	850	1500
Sampling depth mm	430	710	1355
Number of chambers	3	3	5
Chamber capacity mL	14	17	17
Price Each US\$	1,076.55	1,159.34	1,478.41

### ③ MULTI-SAMPLER V4A (AISA 316 SS) / PTFE, 25 MM DIAMETER\*

5316	-0055	-0085	-0150
Total length mm	550	850	1500
Sampling depth mm	430	710	1355
Number of chambers	3	3	5
Chamber capacity mL	14	17	17
Price Each US\$	660.06	789.08	1,263.81

### ④ UNO-SAMPLER V4A (AISA 316 SS), 25 MM DIAMETER\*

5316	-1055	-1085	-1150
Total length mm	550	850	1500
Sampling depth mm	430	710	1355
Number of chambers	1	1	1
Chamber capacity mL	17	17	17
Price Each US\$	660.06	840.25	1,229.94

### ⑤ ALL-LAYER-SAMPLER ALUMINUM, 25 MM DIAMETER\*

5317	-2055	-2085	-2150
Total length mm	550	850	1500
Sampling depth mm	430	710	1355
Number of chambers	3	3	5
Chamber capacity mL	70	130	260
Price Each US\$	262.99	287.35	377.51

### ⑤ ALL-LAYER-SAMPLER V4A (AISA 316), 25 MM DIAMETER\*

5316	-2055	-2085	-2150
Total length mm	550	850	1500
Sampling depth mm	430	710	1355
Number of chambers	3	3	5
Chamber capacity mL	70	130	260
Price Each US\$	1,035.10	1,193.41	1,436.96

\*Corresponds to ISTA standard for seed lengths of 10 mm (wheat, oats) and 5 mm (flax, vetches).



# Tubus & Milky I for sampling of bulk goods and milk powders



## Tubus - the sampler for bulk goods



Simple, inexpensive sampler for free flowing bulk goods up to approximately 10 mm diameter. This makes it possible, for example, to remove hazel nuts, blends of tea, grain or similar items from large sacks.

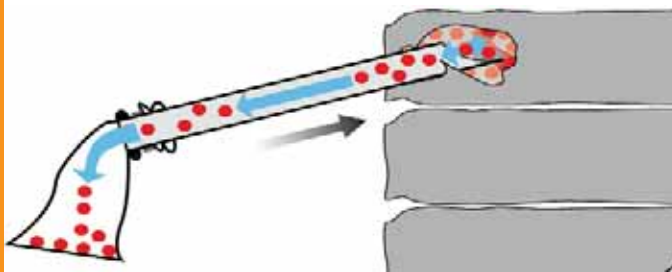
### Operation

Insert Tubus into a sack to the desired sampling depth, while keeping the collection tube closed using your hand. When you take away your hand, the sample flows directly through the open tube into the container or sampling bag beneath it.

- Choice of 2 lengths, 400 mm and 800 mm
- Also for coarse-grained bulk goods
- AISI 316 stainless steel
- Corresponds to ISTA standard for seed lengths of 20 mm (beans, corn) and 10 mm (wheat, oats).

### TUBUS

5382	-0040	-0080
Length mm	400	800
Diameter mm	40	40
Price Each US\$	185.01	228.92



## Milky - sampling lance according to EN ISO 707\*



Milk powder collector made of AISI 316 stainless steel, sterilizable. Developed especially for milk powder samples, conforms to standards of DIN and IDF (Int. Dairy Federation). The collector is inserted into bags or casks and the sample is removed using a semi-circular profile lance.

- Insertion depth 385 mm, total length 480 mm
- Outer diameter approximately 28 mm
- Now made of AISI 316 stainless steel

\* DIN 10327, IDF 50C: 1995

### MILKY

	5321-0300
Sample Capacity mL	150
Price Each US\$	270.37

**Close-it Food** - *proven its value repeatedly*

- With steam-lock for hermetically sealed closure.
- No lumping of hygroscopic powders.
- Closure seal that has proven its value repeatedly, even on dusty and slightly moist sacks.
- Can be written on using a pen, pencil or felt tip pen.
- Samples available.

Taking samples from sacks, boxes, Big-Bags, etc. with sampling lances is a common and time-proven practice. This produces holes through which easily flowing bulk goods could escape from the container. Close-it prevents this in an uncomplicated manner.

**Close-it** has been specially developed for this purpose. The label has a sandwich-type structure (aluminum/paper) and seals the container hermetically (vapor barrier). This virtually prevents hygroscopic powders from clumping together. The label is not just used to provide a hermetic seal. It is also used for providing quality control information (sampling date, release yes/no, name of tester, etc.).

The label is available with printing in red, blue, green, yellow, black and neutral. "Close-it" can be written on with ball-point pen, pencil or felt-tip marker.

The rear of the label is coated with a powerful adhesive so that "Close-it" sticks firmly to most commercial containers, even to surfaces coated with fine powder where conventional labels or adhesive tape will not adhere. "Close-it", the original, will even stick to slightly moist surfaces. The "Close-it" dispenser ensures safe storage and simple removal of the labels. A built-in marking plate allows the labels to be conveniently written on.

In response to numerous requests by our customers we have now developed **Close-it food**, a control seal with an adhesive approved for use with foodstuffs. The adhesive complies with the European guidelines for foodstuffs.

Just like the original, "Close-it food" has a barrier layer of aluminum foil. This means that "Close-it food" is suitable for sampling foodstuffs, pharmaceuticals, cosmetics, food additives – in short, for all applications in which the product must not be contaminated by contact with the adhesive.

Supplied in the proven size of 95 x 95 mm in rolls each with 500 control seals or in 150 x 150 mm in rolls of 250 seals.

**CLOSE-IT FOOD**

<b>5303</b>	<b>-2017</b>	<b>-2018</b>
Description	printed	unprinted
Size mm	95 x 95	95 x 95
Labels per roll	500	500
Price per roll US\$	113.23	113.23

<b>5303</b>	<b>-3017</b>	<b>-3018</b>
Description	printed	unprinted
Size mm	150 x 150	150 x 150
Labels per roll	250	250
Price per roll US\$	165.57	165.57

**ACCESSORIES**

<b>5303</b>	<b>-9000</b>	<b>-9100</b>
Description	Dispenser for labels 95 x 95 mm	Dispenser for labels 150 x 150 mm
Price each US\$	163.22	194.85



# All-layer scratcher I for powders and granules

## All-layer scratcher - easy to empty



Special sampler for powders and granules **that do not flow freely**. The sample is transferred to the closable inner tube using a scraper. Sliding PTFE separators are used to divide the inner tube into different zones. The separators also prevent the sample from being mixed.

- For caked bulk materials
- Variable zones thanks to sliding PTFE separators
- Made from AISI 316 stainless steel and PTFE
- Length 1000 mm, diameter 25 mm
- Autoclavable

### ALL-LAYER SCRATCHER

	5351-1000	5304-0100
Description	All-layer scratcher	Cleaning brush
Diameter mm	25	NA
Length mm	1000	1000
Price Each US\$	806.32	90.64



SAVE 10% All orders over \$250!

# MicroSampler I *useful for taking small samples, sterilizable*

## MicroSampler - *useful for taking small samples, sterilizable*

Specially designed for removal of the smallest quantities of powders.

Sample quantities of 0.2 ml, 0.5 ml, 1.0 ml, 2.0 ml, 5.0 ml and 10 ml can be taken at varying depths from sacks or containers in a clean, fast and simple way.

The head of the MicroSampler is interchangeable (not included). This enables heads with different volumes to be used.

- Exact sampling point can be chosen
- Different volumes and lengths available
- Conforms to GMP/FDA
- Head removable, easy cleaning
- Made of AISI 316 stainless steel



### MICROSAMPLER

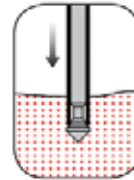
5307	-1055	-1085	-1120
Length mm	550	850	1200
Tube Diameter mm	12.5	12.5	12.5
Price Each US\$	421.30	467.67	509.01

5307	-2055	-2085	-2120
Length mm	550	850	1200
Tube Diameter mm	25	25	25
Price Each US\$	547.99	591.79	630.78

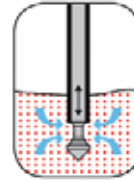
### HEADS TO FIT MICROSAMPLER

5307	-0102	-0105	-0110
Tube Diameter mm	12.5	12.5	12.5
Volume mL	0.2	0.5	1.0
Price Each US\$	126.69	126.69	126.69

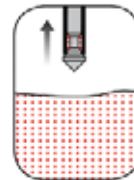
5307	-0202	-0205	-0210
Tube Diameter mm	25	25	25
Volume mL	2.0	5.0	10.0
Price Each US\$	172.95	172.95	172.95



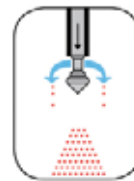
1. Insert MicroSampler into powder.



2. Open volume head at target spot by pushing the buttons; sample flows in.



3. Close volume head; the sample is collected.



4. Withdraw the lance, open volume head again, and remove the sample.



Proud to be your  
**supplier of choice**  
for over 50 years

**Dynalab**  
Corp  
*Supplying Science and Education*

350 Commerce Drive  
Rochester, NY 14623  
Telephone 800-828-6595  
Fax 585-334-0241  
[www.dynalabcorp.com](http://www.dynalabcorp.com)

**Dynalab Corp.**

800-828-6595